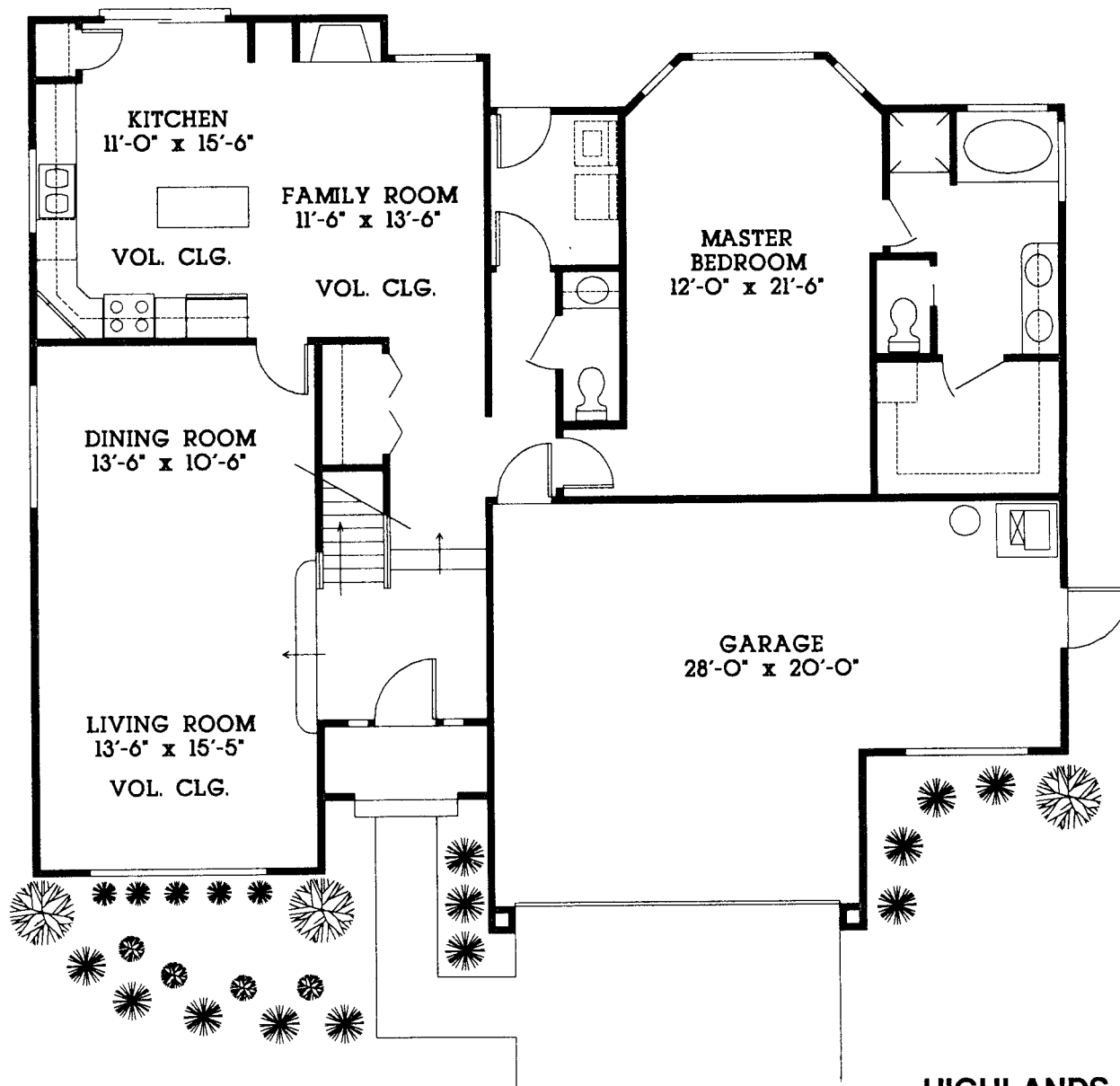




## THE OSPREY

This is a very efficient two-story family home featuring a master bedroom on the first floor and an upstairs loft and hall overlooking the kitchen, living room and family room below. This open design imparts a feeling of added spaciousness which greatly enhances the atmosphere of the home. The loft portion upstairs may be converted into a fourth bedroom if desired.

The Osprey is a functional and practical design with an especially attractive exterior appearance. The design of the garage allows for storage of a golf cart or small boat and can even be built larger, if desired, to accommodate a large boat or recreational vehicle.



We are continually finding v  
our homes and consequen  
change specifications, bran  
without notice. Dimensions  
in this sales literature, and s  
not be included as standard

**HIGHLANDS CONSTRUCTION**

Builder of Custom Homes a  
and Other Fine